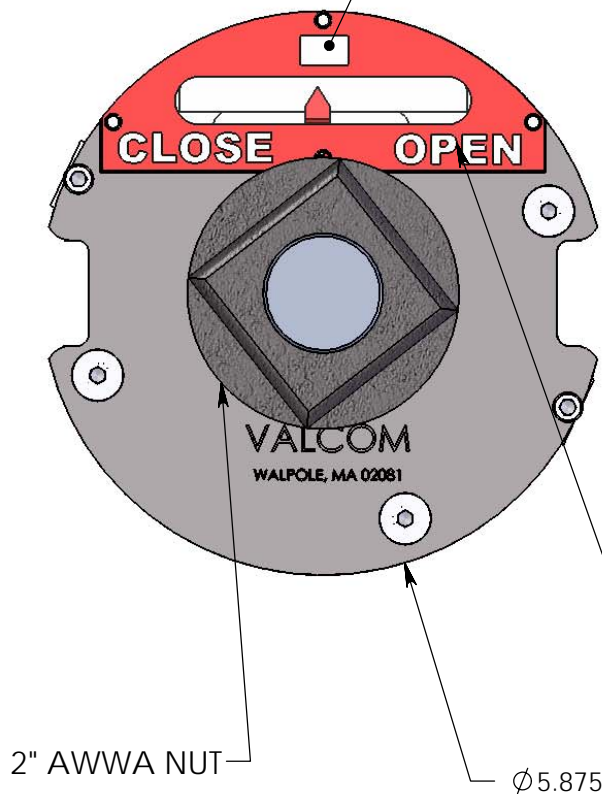
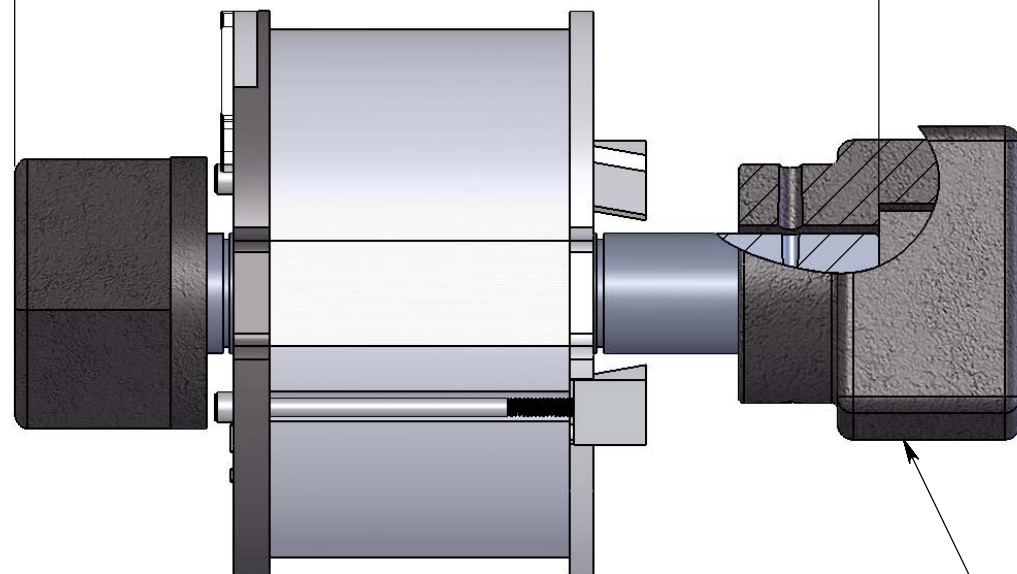


TURN RATIO WINDOW
RATIO TO BE SPECIFIED BY
CUSTOMER UP TO 800:1 MAX

9.00 APPROX DISTANCE TO INSIDE OF
POCKET TO TOP OF 2" AWWA NUT



TURN DIRECTION OPTIONAL
CLOSE-OPEN OR OPEN-CLOSE
TO BE SPECIFIED BY CUSTOMER



2" AWWA NUT POCKET

VALCOM MODEL 179-LP LOW PROFILE POSITION INDICATOR

TOOLING RESEARCH INC.

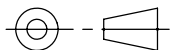
81 DIAMOND ST. WALPOLE, MA 02081

508 668 1950

UNLESS OTHERWISE
SPECIFIED REMOVE ALL BURRS
AND SHARP EDGES

CUSTOMER CODE

THIRD ANGLE PROJECTION



DRAWN

MF

09-13-05

CHECKED

RESP ENG

MFG ENG

QTY PER ASSY

DROP-IN POSITION IND.

SIZE A DWG. NO.

179-LP

REV.

SCALE

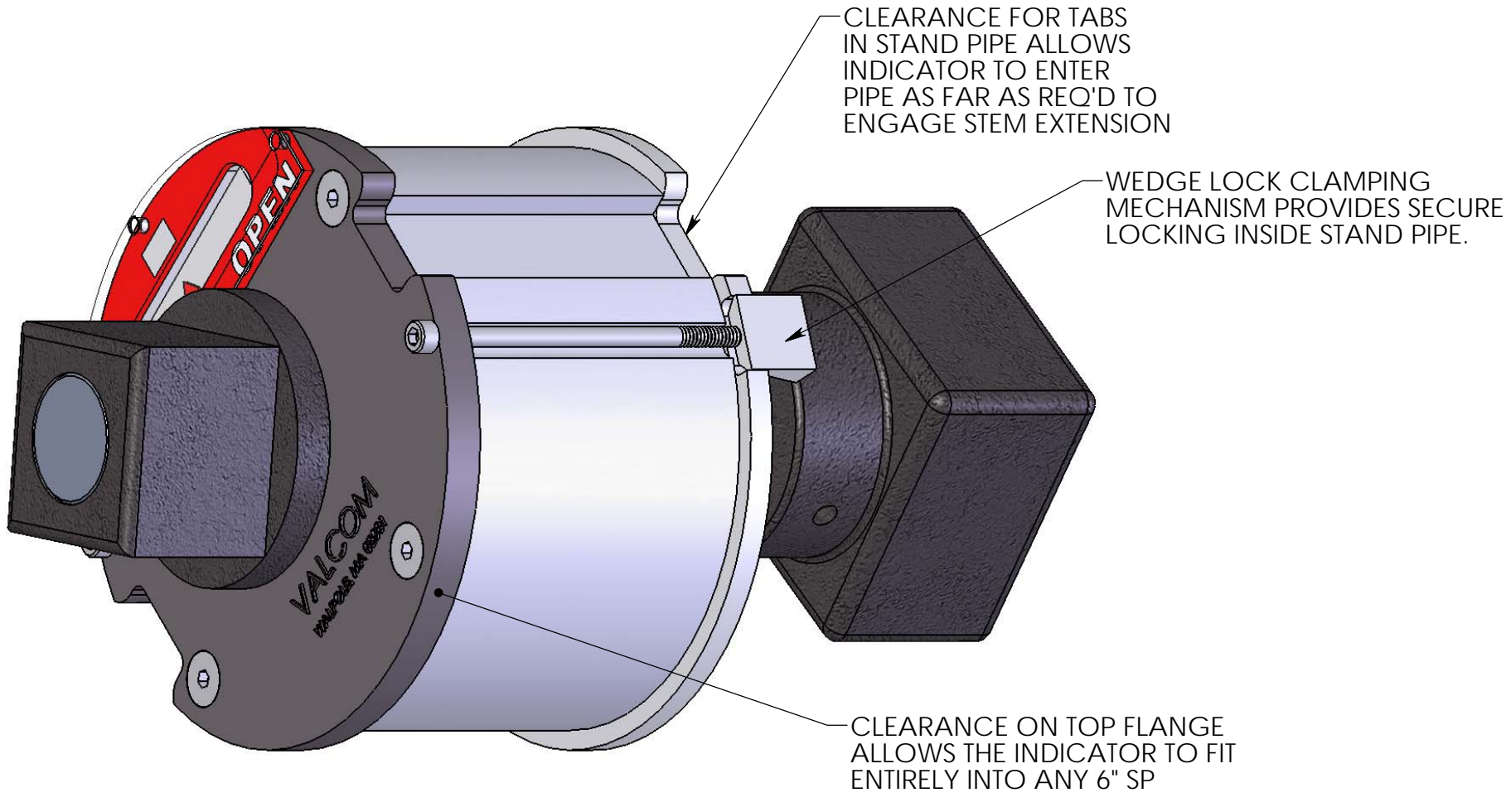
FILE REF:

SHEET 1 OF 1

THE INFORMATION CONTAINED IN
THIS DRAWING IS THE SOLE PROPERTY
OF TOOLING RESEARCH, INC. ANY
REPRODUCTION OF THIS DRAWING
IN WHOLE OR IN PART WITHOUT THE
WRITTEN PERMISSION OF TOOLING
RESEARCH, INC. IS PROHIBITED

UNLESS OTHERWISE SPECIFIED
DIMENSIONS ARE IN INCHES
TOLERANCES ARE:
FRACTIONS DECIMALS ANGLES
 $\pm 1/64$ $XX \pm .010$ $\pm 1^\circ$
 $XXX \pm .005$
 $XXXX \pm .0005$

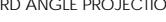
DO NOT SCALE DRAWING



**VALCOM MODEL 179-LP
LOW PROFILE POSITION INDICATOR**

CAN BE USED WITH STANDARD OR
LOCKING VB COVERS

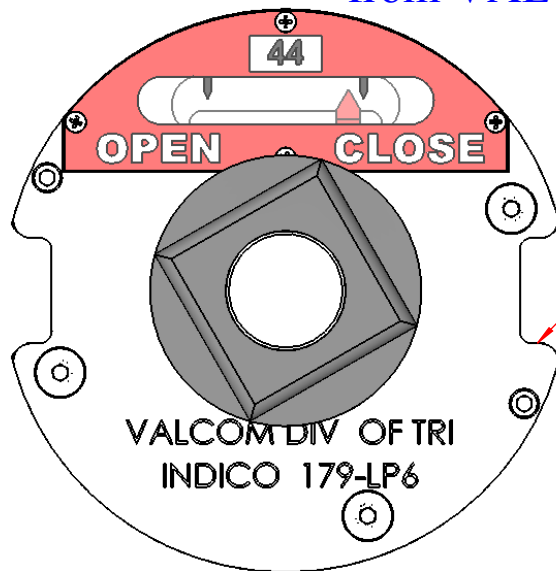
ELIMINATES NEED FOR RISERS

TOOLING RESEARCH INC. 81 DIAMOND ST. WALPOLE, MA 02081 508 668 1950			UNLESS OTHERWISE SPECIFIED REMOVE ALL BURRS AND SHARP EDGES	DRAWN <i>MF</i> 09-13-05	DROP-IN POSITION IND.			
THE INFORMATION CONTAINED IN THIS DRAWING IS THE SOLE PROPERTY OF TOOLING RESEARCH, INC. ANY REPRODUCTION OF THIS DRAWING IN WHOLE OR IN PART WITHOUT THE WRITTEN PERMISSION OF TOOLING RESEARCH, INC. IS PROHIBITED			CUSTOMER CODE	CHECKED				
			THIRD ANGLE PROJECTION	RESP ENG				
UNLESS OTHERWISE SPECIFIED DIMENSIONS ARE IN INCHES TOLERANCES ARE: FRACTIONS DECIMALS ANGLES ±1/64 XX±.010 ± 1° XXX±.005 XXXX±.0005				MATERIAL	MFG ENG	SIZE A	DWG. NO. 179-LP	REV.
			DO NOT SCALE DRAWING			QTY PER ASSY	SCALE	FILE REF:

MODEL 179-LP6 LOW PROFILE POSITION INDICATOR

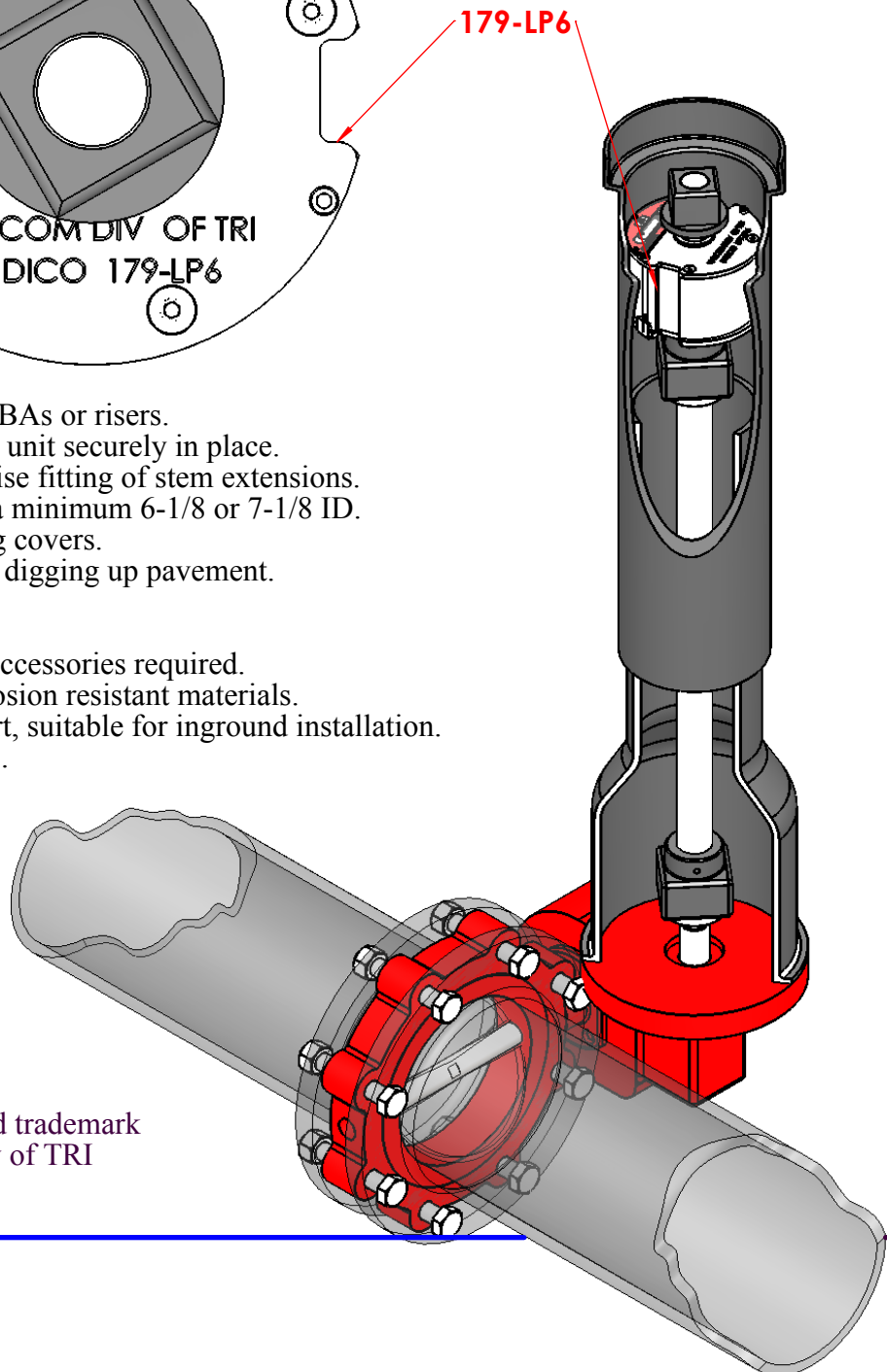
CAUTION! IS IT OPEN OR CLOSED

Know the status of your buried service valves with the 179-LP6 from VALCOM



FEATURES:

- Eliminate the need for VBAs or risers.
- Wedgelock system locks unit securely in place.
- Eliminates need for precise fitting of stem extensions.
- Fits any valve box with a minimum 6-1/8 or 7-1/8 ID.
- Can be used with locking covers.
- Can be removed without digging up pavement.
- Gear ratios to 900:1.
- One low price.
- Drop in installation, no accessories required.
- Manufactured from corrosion resistant materials.
- Sealed against dust & dirt, suitable for inground installation.
- Fits existing installations.



"INDICO" is a registered trademark
of the VALCOM div of TRI
508 668 5583

Calibration Columns "The pump and valve accessory people"
Pulsation Dampeners
Electronic Valve Failsafes
Position Indicators
Modulating Tees
Stem Guides
Back Pressure Valves
Pressure Relief Valves

Valcom

A div of Tooling Research Inc.

81 Diamond St. PO Box 306 Walpole MA 02081
ph 508 668 5583 fax 508 668 5203

Website www.tooling-research.com

Installation of 179-LP low profile position indicator.

179-LP is designed to pass beyond locking hubs cast into standpipes and sit at any predetermined level within the pipe.

Note: Leave tape in place on Position indicator when installing for easier installation.

Insert position indicator into any 6" standpipe/ valve box until it engages 2" AWWA drive nut located on end of stem extension.

Insure that the arrow on the position indicator and the valve position coincide. IE if the valve is closed the position indicator arrow should be aligned with the black arrow on the closed side and vice versa.

Once located in position tighten two locking screws located at 180 degrees from each other on the top of the indicator using a long handled 5/32" Allen wrench. Preferably a ball driver type, but standard end will work. Tightening these screws will draw the two corresponding wedges between the indicator and the pipe wall providing a solid seat for the position indicator. Do not over tighten.

Install standard locking or non locking cover as required.

The 179-LP position indicator is designed to allow installation in any 6" standpipe without the necessity for a VBA. It can also be removed if required, and because of it's ability to fit entirely inside the pipe it eliminates the necessity for precise calculations of stem extension lengths.

Final note: It may be necessary in some instances to remove excess slag in some standpipes in order to allow the indicator to seat properly.